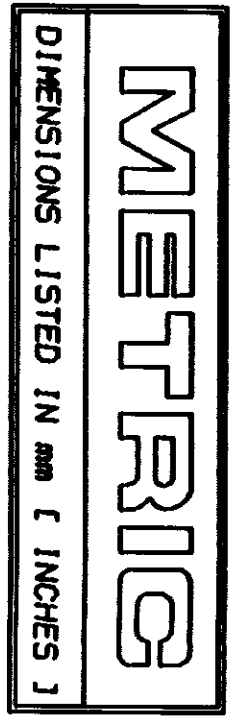


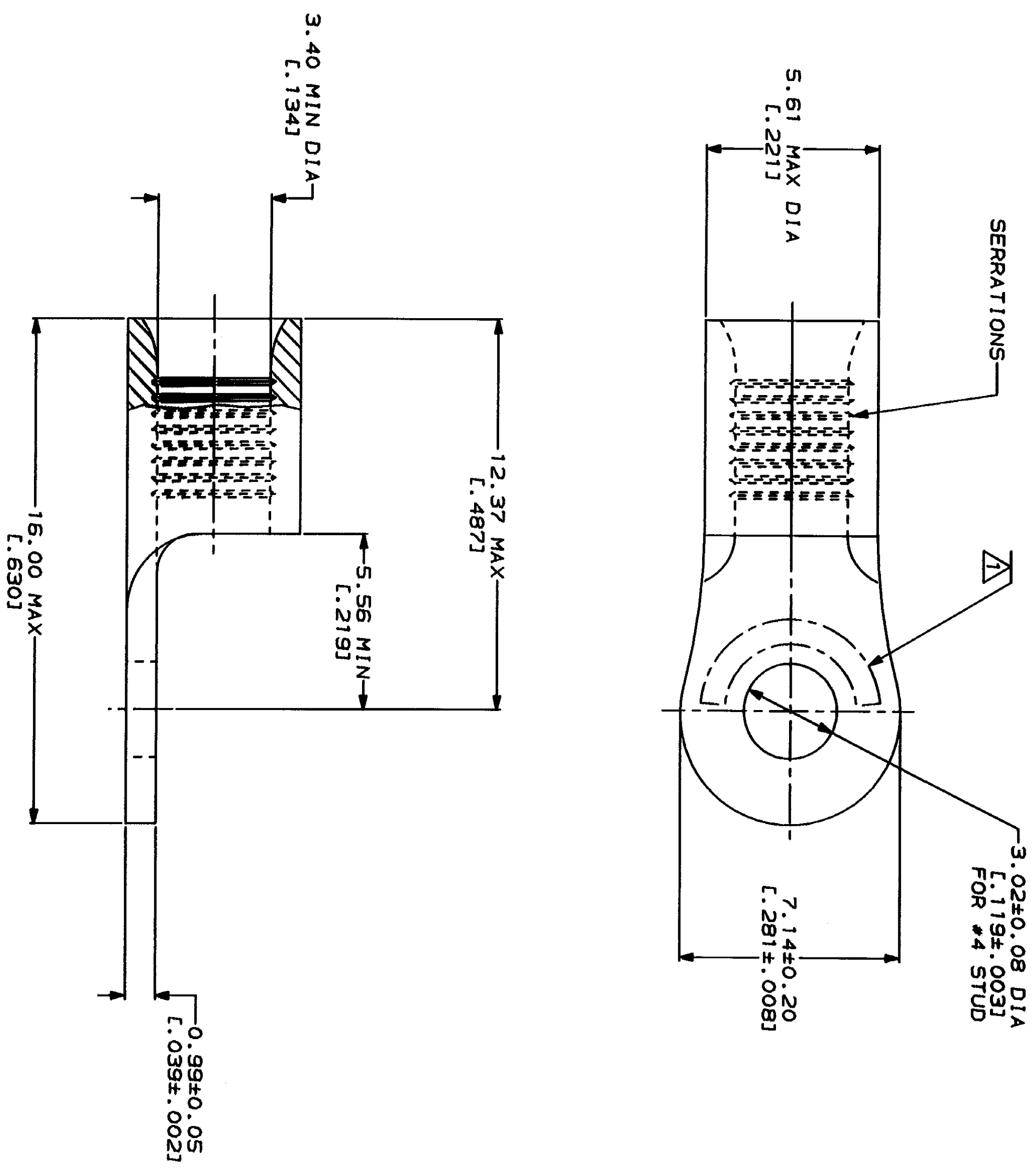
LOC	DIST	ZONE	LTM	DESCRIPTION	DATE	APPD
G	14			REVISED PER 0720-0230-93	2/28/94	

REVISIONS	
NO	DESCRIPTION
1	REVISED PER 0720-0230-93



AMP WIRE RANGE 12-10 AWG STRAINED	UL E13288 Listed
AMP 12-10 AWG STRAINED	MILITARY P/N AND CLASS
NOT CERTIFIED	NOT APPLICABLE

△ STAMP AMP 12-10* APPROX AS SHOWN



AMP INCORPORATED
CUSTOMER SERVICE SYSTEMS

FOR ADDITIONAL
PRODUCT INFORMATION OR
COPIES OF DRAWINGS
AND TECHNICAL DOCUMENTS

FOR APPLICATION
TOOLING INFORMATION
FOR ORDER ENTRY

MAX RECOMMENDED OPERATING
TEMPERATURE:
170°C MAX

VOLTAGE RATING:
NOT APPLICABLE

WIRE CROSS SECTIONAL AREA RANGE:
2.62-6.64mm² (S,180-13,100) CIR MILS
STRAINED

PRODUCT INFORMATION CENTER
1-800-522-6752

TOOLING ASSISTANCE CENTER
1-800-722-1111

1-800-526-5142

DO NOT SCALE PRINT.
UNLESS SPECIFIED
DIMENSIONS IN MILLIMETERS
TOLERANCES ON:
1 PLG DEC ± .1
2 PLG DEC ± .1
3 PLG DEC ± .1
ANGLES ± .1

FINISH: TIN PLATE
0.0025±(L.000100) MIN
THK PER MIL-T-10727

DR 2-5-93
TA BRINKMAN

CHK 2-5-93
DA PATTERSON

APPD 2-5-93
DE MILLER

APPD 2-5-93
JL NECKLEY

PRODUCT SPEC

AMP
AMP Incorporated
Harrisburg, PA 17185-3608

TERMINAL, RING TONGUE,
BUDGET

SIZE CASE CODE DRAWING NO
SCALE 8:1 00779 C-34891